

Makita[®]

12V Max Brushless Threaded Rod Cutter

SC103DZ



BRUSHLESS

Product Objectives

- Designed to suit the needs of industrial air conditioning installers, plumbers, electricians, ceiling installers and other commercial fit out trades
- Develop a compact mobile tool, optimised for protecting thread integrity whilst cutting threaded rod in overhead applications



Product Overview



Product Specification Sheet

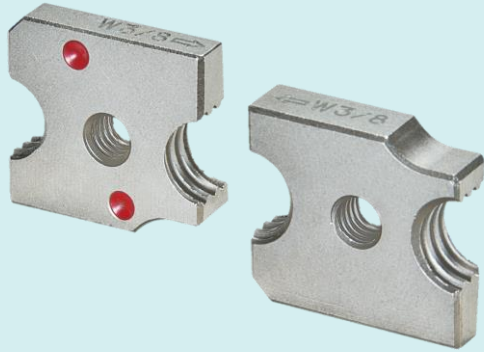


Motor	Brushless
Cutters	M6, M8, M10, W3/8
Driving System	Cam
LED Job light	Yes
Skin weight	2.4kg
Weight (with 4.0Ah battery)	2.8kg

- **Depth gauge** – for cutting rod at the same length every time
- **Reversible blades** – for added convenience and longer life
- **Cut capacity** – capable of cutting W3/8 mild steel, W3/8 stainless, M6 mild steel, M6 stainless, M8 mild steel, M8 stainless, M10 mild steel
- **Hand guard** – protect hand from accidental scuffing with threaded rod whilst in operation
- **Hanging hook** – can be attached near by frame work for added convenience when not in use
- **BL Motor** – provides incredible run time with low operating temperature
- **Rod guide** – adjustable to two positions depending on rod size to help with stability during operation
- **Reversing switch** – assists in clearing rod from blades if rod becomes stuck during operation

Advantages

Durability



Reversible blades for maximum life

Performance



Clean cuts of threaded rod

Convenience






Setting 1: W3/8, M10 rod / Setting 2: M8, M6

Ergonomics






Superior design for overhead cutting

Our Range

	SC103D	DSC102	DSC121
			
	BRUSHLESS	BRUSHLESS	BRUSHLESS
Max. cutting capacities	Mild steel: W3/8, M10, M8, M6 Stainless steel: W3/8, M8, M6	Mild steel: W3/8, M10, M8, M6 Stainless steel: W3/8, M8, M6	M12
Overall length	180mm	199mm	212mm
Skin weight	2.4kg	2.6kg	5.4kg
Weight (with battery)	2.8kg	3.2kg	6.0kg
Voltage	12V Max	18V	18V

Accessories

Standard Accessories		
	271445-1	Thumb Screw M4x10 (for depth gauge)
	415486-9	Depth Gauge
	458380-2	Blade Cover
	783202-0	Hex Wrench 4
	199083-6	M10 Mild Steel blades

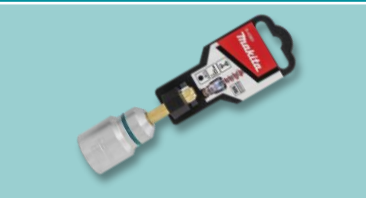


Optional Accessories		
	199080-2	W3/8 Mild & Stainless Steel
	199086-0	M6 Mild & Stainless Steel
	199084-4	M8 Mild & Stainless Steel

Threaded Rod Accessories

Threaded Rod Hollow Socket Adaptors

	B-43290	9-16" x 75mm Hollow Socket Adaptor
	B-43309	9-16" x 150mm Hollow Socket Adaptor
	B-43315	9-16" x 305mm Hollow Socket Adaptor
	B-43321	9-16" x 455mm Hollow Socket Adaptor
	B-43337	9-16" x 610mm Hollow Socket Adaptor

Threaded Rod Socket Adaptors

	B-42961	6mm Threaded Rod Socket Adaptor 1/4" Hex Drive
	B-42977	8mm Threaded Rod Socket Adaptor 1/4" Hex Drive
	B-42999	3 Pc Threaded Rod Socket Adaptor Set (6mm, 8mm & 10mm)