

Makita[®]

18V 20mm Hole Punch

DPP200ZK



LXT[®]

Product Objectives

- To design a powerful cordless hole punch powered by Makita's 18V batteries
- To develop a hole punch capable of punching holes up to 20mm in diameter in 8mm mild steel



Product Overview

Automatic Punch Return

Return Lever

High durability

Adjustable depth guide

LED Job Light



360° Rotatable Handle

Product Specification Sheet



- **Automatic Punch Return** – Punch stop mechanism automatically retracts the die once a punch is complete, allowing for fast and effortless hole punching
- **Adjustable depth guide** – allows for the hole punch location to be adjusted to 40mm from the edge of the work piece
- **Return lever** – allows for the punch to be retracted during mid operation
- **High durability** – all metal gears as well as metal housing, providing the tool with maximum job site strength and durability
- **LED Job light** – Built in LED job light which illuminates the work piece for greater convenience during operation
- **360° Rotatable handle** – ergonomic handle which can be rotated 360° to allow the user to comfortably work in different positions and angles

Max. capacity mild steel	ø20mm in 8mm thick
Max. capacity stainless steel	ø20mm in 6mm thick
Max. throat depth	40mm
Hole type	Round / Oblong
Overall length	417mm
Skin weight	9.9kg
Weight (with battery)	10.5kg
Voltage	18V

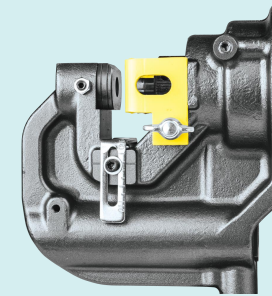
Advantages

Performance



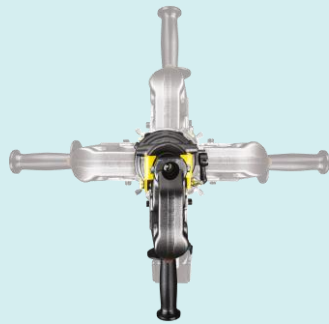
Capable of punching holes up to 20mm in diameter in 8mm mild steel

Productivity



Automatic punch return allows for fast and effortless hole punching

Convenience



Grip handle rotates 360° allowing optimal positioning in any space

Durability

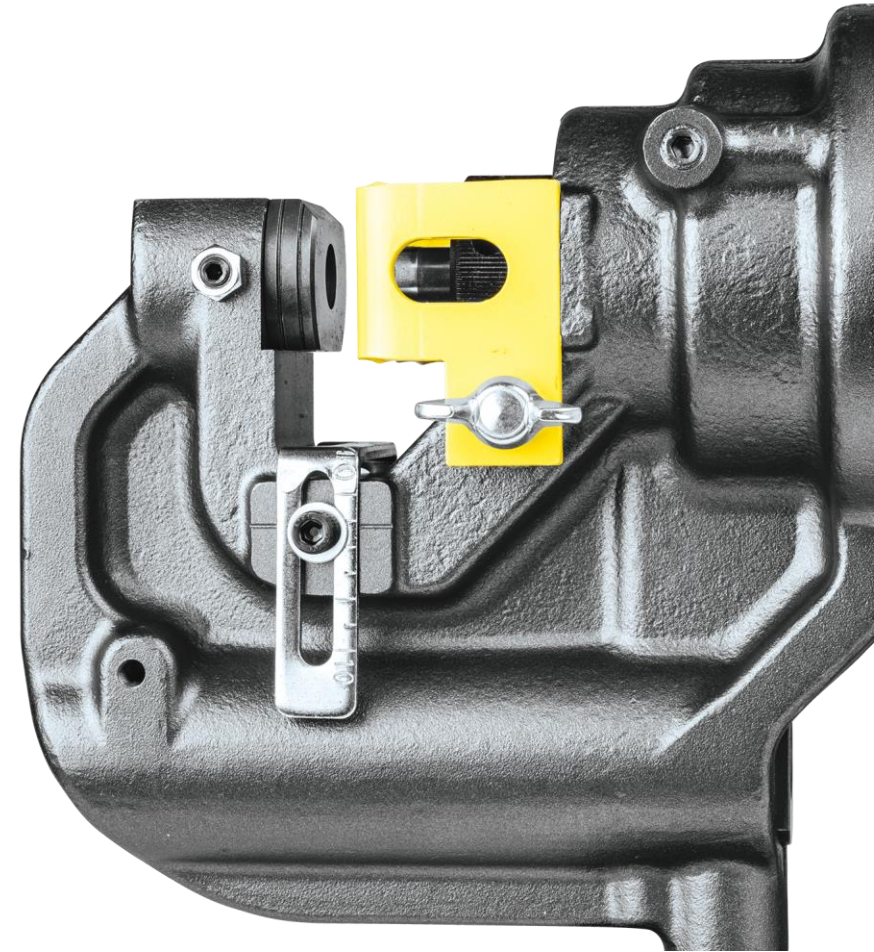


All metal housing for job site strength and durability

Automatic Punch Return

After a hole is punched, hydraulic pressure automatically pulls off and retracts the die from the work piece and returns it to the initial position, enabling for efficient and continuous hole punching.

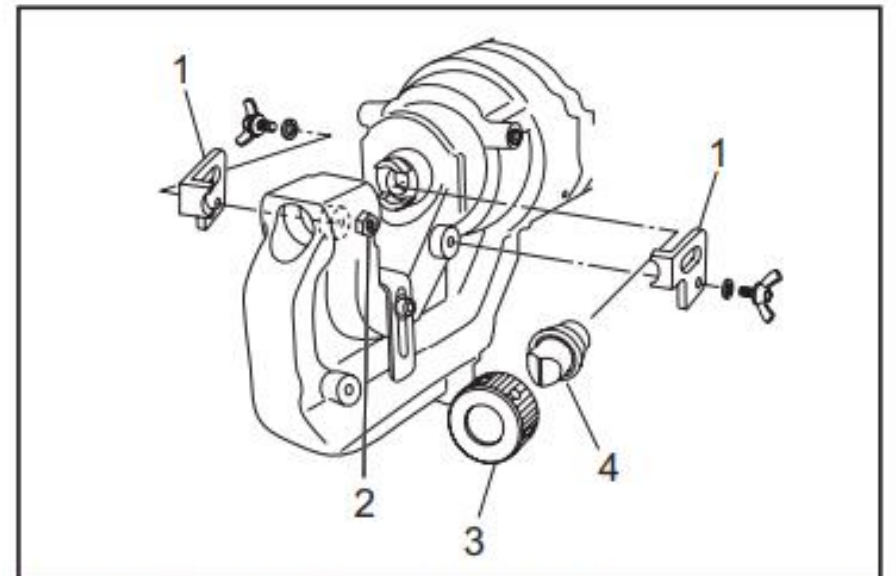
This allows for fast and effortless hole punching speed in under 5 seconds.



Frequently Asked Questions

How to replace the round punch and die?

1. Ensure punch piston is fully retracted and remove strippers.
2. Unscrew the punch retaining nut to remove punch and remove set bolt and the nut to remove the die.
3. Place the die in the C frame in the proper orientation. Secure firmly with set bolt and tighten the nut.
4. Place punch in punch retaining nut. Insert punch with nut into the punch piston and hand tighten the nut.
5. Ensure punch is correctly positioned in the punch rod and tighten the punch retaining nut firmly with the bar supplied.
6. Restore the strippers.

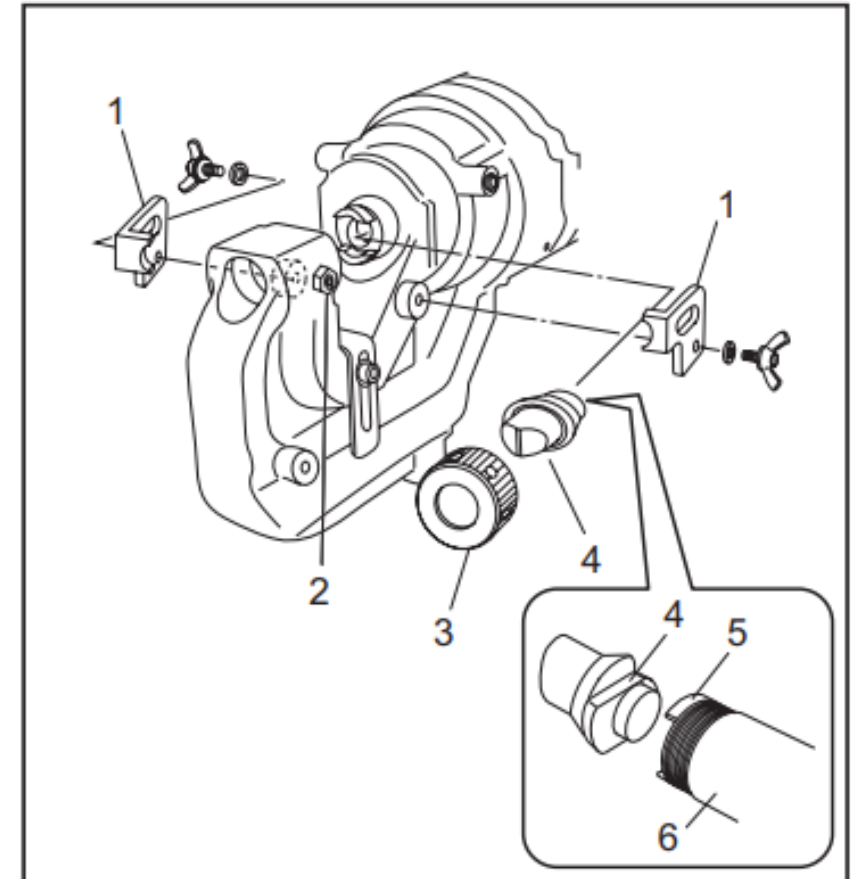


► 1. Stripper 2. Nut and set bolt 3. Punch retaining nut
4. Round punch

Frequently Asked Questions


How to replace the oblong punch and die?

1. Ensure punch piston is fully retracted and remove strippers.
2. Unscrew the punch retaining nut to remove punch and remove set bolt and the nut to remove the die.
3. Secure the oblong die firmly with the set bolt and tighten the nut.
4. Place oblong punch in punch retaining nut. Position the stepped edge of the oblong punch in punch piston and hand tighten nut.
5. Ensure punch is correctly positioned in the punch rod and tighten the punch retaining nut firmly with the bar supplied.
6. Restore the strippers.



- 1. Stripper 2. Nut and set bolt 3. Punch retaining nut
4. Oblong punch 5. Stepped edge 6. Punch rod

Accessories

Standard Accessories		
	SC05340100	12mm Punch
	SC00000215	12mm Die
	-	8mm – Hex Wrench 4mm - Hex Wrench 3mm – Hex Wrench
	-	Nut bar
	-	8/10mm Spanner Wrench
	SC00000106	Hydraulic Oil
	SC03300790	Slide Stopper
	-	Case

Optional Accessories		
	SC03801080	Work Stand
	SC00000106 SC00000142 SC00000270	35ml – Hydraulic Oil 150ml – Hydraulic Oil 1L – Hydraulic Oil

Accessories

Round Punch



Punch Size	Punch Part Number	Die Part Number
6mm	SC05340040	SC00000203
6.5mm	SC05340050	SC00000205
8mm	SC05340060	SC00000207
8.5mm	SC05340070	SC00000209
10mm	SC05340080	SC00000211
11mm	SC05340090	SC00000213
12mm	SC05340100	SC00000215
13mm	SC05340110	SC00000217
14mm	SC05340120	SC00000219
15mm	SC05340130	SC00000221
16mm	SC05340140	SC05332710
18mm	SC05340150	SC00000223
20mm	SC05340160	SC05352510

Oblong Punch



Punch Size	Punch Part Number	Die Part Number
6mm x 10mm	SC05340200	SC00000244
6.5mm x 13mm	SC05340210	SC00000246
8.5mm x 13mm	SC05340220	SC00000248
8.5mm x 17mm	SC05340230	SC00000250
9mm x 13.5mm	SC05340240	SC00000252
9mm x 18mm	SC05340250	SC00000254
10mm x 15mm	SC05340260	SC00000256
10mm x 20mm	SC05340270	SC00000258
11mm x 16.5mm	SC05340280	SC00000260
12mm x 18mm	SC05340290	SC00000262
13mm x 19.5mm	SC05340300	SC00000264
14mm x 21mm	SC05340310	SC00000266