



# QUICK START GUIDE

## WHAT'S INCLUDED

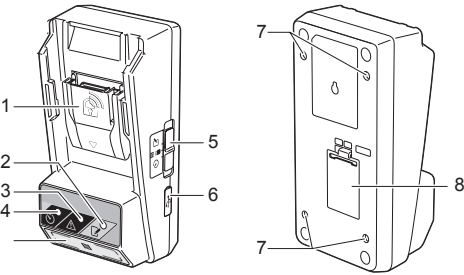
- Coin cell (CR2450) battery (x1, pre-installed)
- Tamper Proof Screws (x4)
- Tamper Proof Screw bit (x1)
- Instruction manual (x1)
- Quick start guide (x1)
- Flash Drive (PC app / Software)
- Micro USB Cable

## REQUIREMENTS

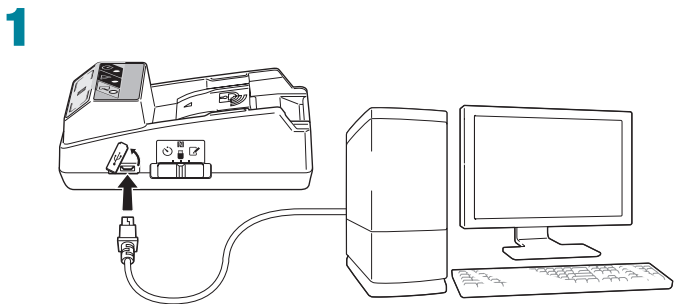
- PC with Windows 7, 8 or 8.1
- Makita battery

## IDENTIFICATION OF PARTS

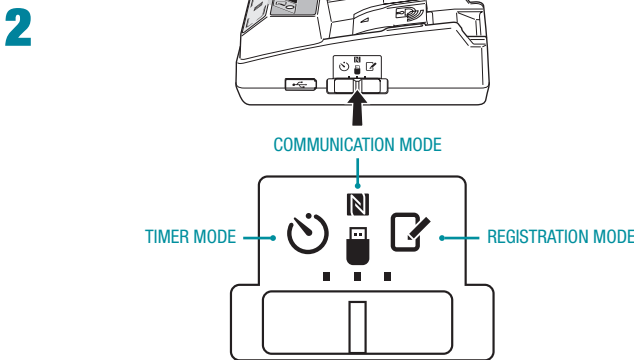
1. Battery cartridge port
2. Registration lamp
3. Warning lamp
4. Timer lamp
5. Operation mode switch
  - Timer Mode
  - Communication Mode
  - Registration Mode
6. USB port (micro-B type)
7. Installation screw holes
8. Battery cover



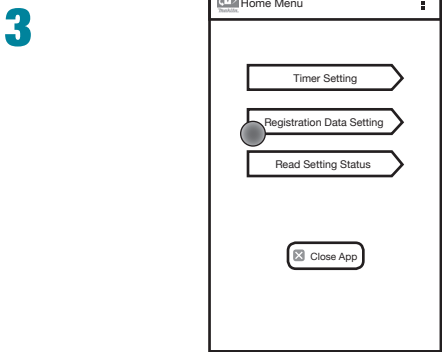
## REGISTRATION



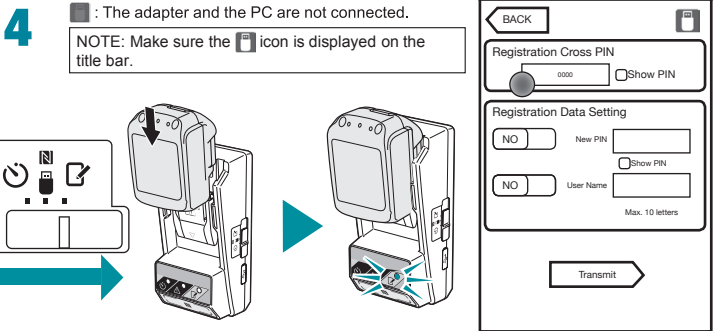
Connect adapter to PC with micro USB cable.



Slide adapter switch to Communication Mode.

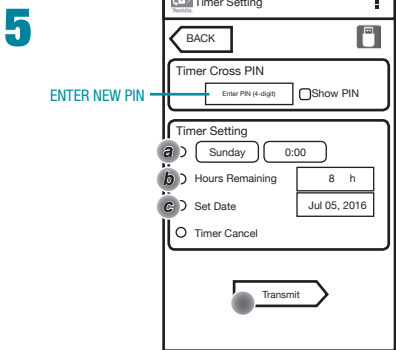


Open software. Click Registration Data Setting.



Load Battery. Slide adapter to Registration Mode. Set PIN and User Name. **Keep initial code as "0000."** Enter New PIN under Registration Data Setting.

## SETTING TIMER & PROGRAMMING THE BATTERY

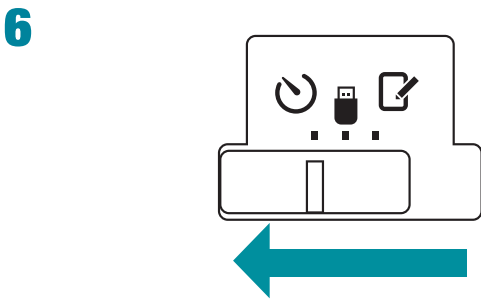


Choose when battery shuts off by (a) day, (b) hour, and (c) calendar date. Click Transmit.

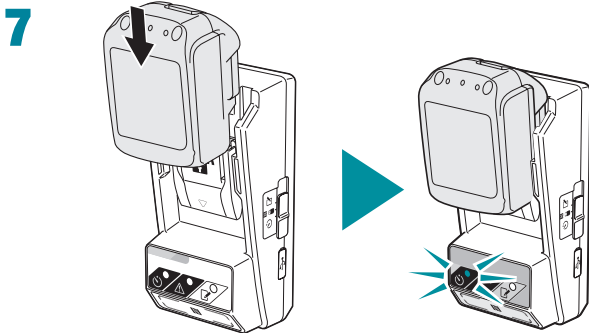
**Day and Time** - Selecting this option will allow you to set the day of the week and time that the battery will shut down at. Great for weekly schedules.

**Total Hours** - Selecting this option will allow you to set the total number of operating hours allowed before the battery will shut down. Maximum Setting: 1200 hours. Ideal for mobile sites and maintenance vehicles. Or when worker is required to unlock batteries at multiple times throughout day.

**Calendar Date** - Selecting this option will allow you to set the exact calendar date that the battery will shut down on. Perfect for extended job durations or for when you do not wish to have an adaptor on a site.



Slide adapter to Timer Mode.



Load battery. A blue light will appear. Timer will apply. Congratulations you are done.

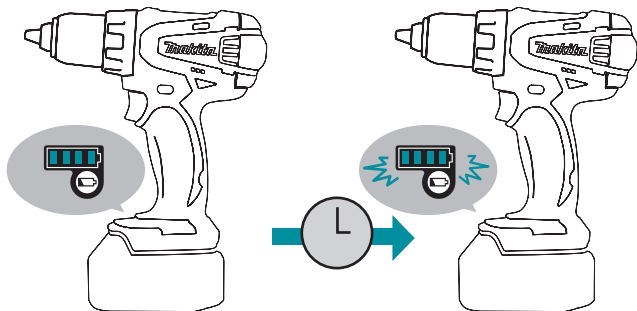
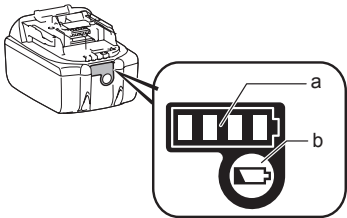


Multiple batteries can be set by simply repeating steps 4 & 6. Slide battery on "Registration Mode" and flipping switch to the "Timer Mode." Repeat for each additional battery.

## USE AND TROUBLESHOOTING

### CHECKING THE SETTINGS OF THE BATTERY CARTRIDGE OR THE ADAPTER

NOTICE: You can check whether the battery cartridge has expired by pressing the button (b) on the cartridge. If the battery cartridge is past its expiration date, all segments of the level indicator (a) will flash.



NOTE: If the battery cartridge will expire in approximately one hour, all segments of the level indicator (a) on the battery cartridge flash.

### SYMPTOM

### CAUSE/REMEDY

The  Warning lamp blinks.	1.Setting is not in Timer Mode or Resgistration Mode when setting PIN or depositing more time in the battery. 2.PIN numbers between BPS01 and battery do not match. 3.Low cell battery in BPS01
The adapter malfunctions.	If you are using the PC app, connect the PC to the adapter before operating the app.
All segments of the level indicator on the battery cartridge flash.	The battery cartridge will expire in approximately one hour.

## ATTENTION

Do not forget the PIN as you will be unable to change the settings.